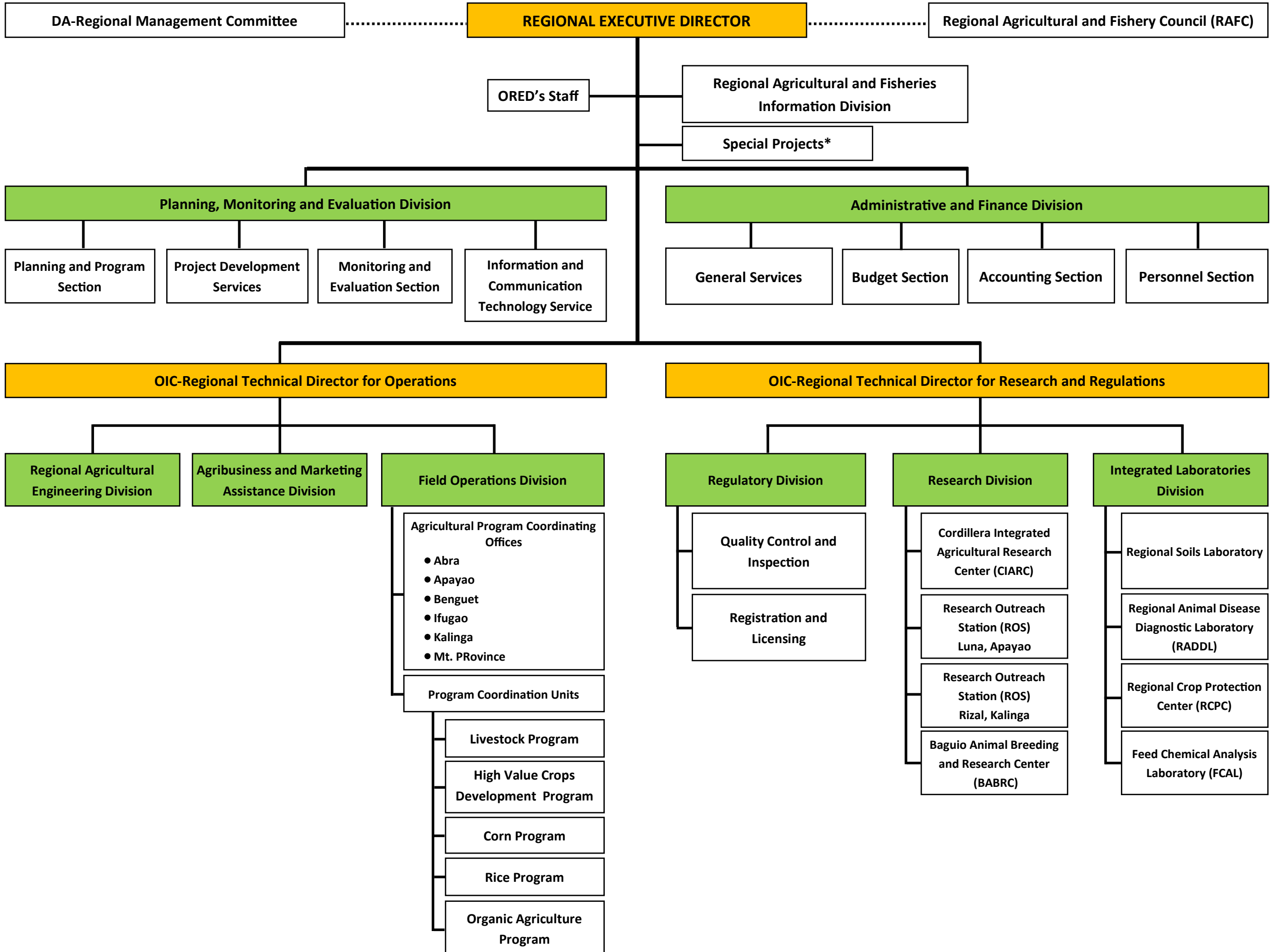




**DEPARTMENT OF AGRICULTURE**

Regional Field Office

Cordillera Administrative Region



DA-Regional Management Committee

**REGIONAL EXECUTIVE DIRECTOR**

Regional Agricultural and Fishery Council (RAFC)

ORED's Staff

Regional Agricultural and Fisheries Information Division

Special Projects\*

**Planning, Monitoring and Evaluation Division**

**Administrative and Finance Division**

Planning and Program Section

Project Development Services

Monitoring and Evaluation Section

Information and Communication Technology Service

General Services

Budget Section

Accounting Section

Personnel Section

**OIC-Regional Technical Director for Operations**

**OIC-Regional Technical Director for Research and Regulations**

Regional Agricultural Engineering Division

Agribusiness and Marketing Assistance Division

**Field Operations Division**

Agricultural Program Coordinating Offices

- Abra
- Apayao
- Benguet
- Ifugao
- Kalinga
- Mt. PProvince

Program Coordination Units

Livestock Program

High Value Crops Development Program

Corn Program

Rice Program

Organic Agriculture Program

**Regulatory Division**

Quality Control and Inspection

Registration and Licensing

**Research Division**

Cordillera Integrated Agricultural Research Center (CIARC)

Research Outreach Station (ROS) Luna, Apayao

Research Outreach Station (ROS) Rizal, Kalinga

Baguio Animal Breeding and Research Center (BABRC)

**Integrated Laboratories Division**

Regional Soils Laboratory

Regional Animal Disease Diagnostic Laboratory (RADDL)

Regional Crop Protection Center (RCPC)

Feed Chemical Analysis Laboratory (FCAL)